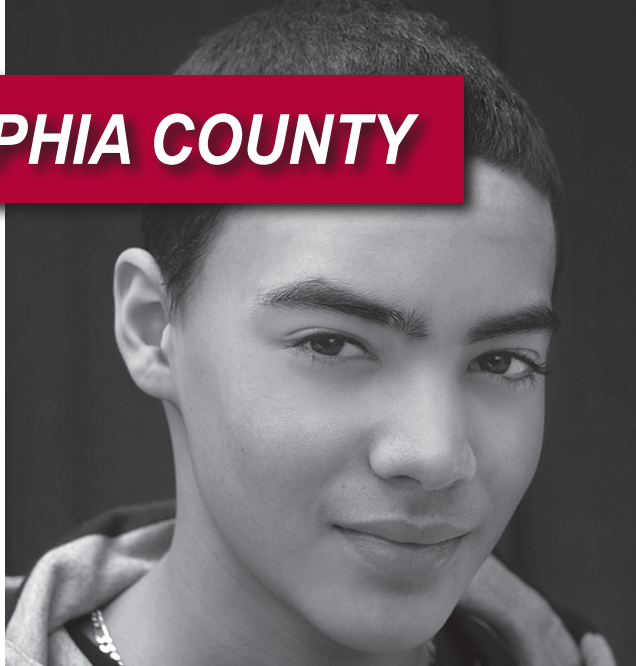


PHILADELPHIA COUNTY



WHERE TO GO FOR HELP



A Guide to Outpatient Behavioral Health Services for
Philadelphia County's Children and Adolescents
Enrolled in Medical Assistance and CHIP



A PUBLICATION OF:

Public Citizens for Children and Youth

TABLE OF CONTENTS

SECTION 1: *Introduction*

What is a Behavioral Health Issue	1
Who Will Help My Child.....	1
My Child Needs Help. What Do I Do	2

SECTION 2: *Types of Care*

I Have Called A Behavioral Health Provider. What Happens Next	3
What Are Behavioral Health Services	3
What Is The Difference Between Outpatient And Community-Based Services	3

SECTION 3: *School-Based Services*

What Are The School-Based Services	4
What's Available For Youth In High School	4
How Can My Child Get These Services.....	5
Do I Have To Pay For These School-Based Services.....	5

SECTION 4: *Paying for Care*

How Do I Pay For Care For My Child	6
Can My Child Get Services Even Without Health Insurance	7

SECTION 5: *What Can I Expect Of These Services?*

How Long Will My Child Wait To Access These Services.....	8
Do I Need To Give Permission For My Child To See A Therapist.....	8
What If I Am Unhappy With My Child's Behavioral Health Provider Or Their Care Plan..	8
If Your Child Is Getting Outpatient Or Community-Based Services	8
If Your Child Is Getting School-Based Services.....	9
What If I Need Help Getting My Child To Therapy	9

SECTION 6: *What Will Be Expected Of Me?*

What Will Be Expected Of Me While My Child Is Getting Behavioral Health Help	17
--	----

SECTION 7: *Special Services*

What Should I Do In An Emergency.....	18
What Resources Are Available For Trauma	18
What Resources Are Available For Drug And Alcohol Treatment For Children And Teens ...	18

SECTION 8: *Other Resources*

19

SECTION 9: *Glossary*.....

20

SECTION 1: INTRODUCTION

These are common issues. In Philadelphia, about 1 in 5 children has behavioral health issues. You are not alone. Help is available for your child at home, in school, or in the community.

WHAT IS A BEHAVIORAL HEALTH ISSUE?

A behavioral health issue is the way someone thinks, acts, or feels that gets in the way of his/her daily life. Most people struggle with the way they think, act, or feel at times. When these issues come all of a sudden or they do not go away, it may be a sign that your child needs help.

Some common behavioral health issues in children are:

- ADHD – Attention Deficit Hyperactivity Disorder
- Anxiety
- Depression
- Autism

WHO WILL HELP MY CHILD?

Behavioral health providers are people who are trained to care for behavioral health issues. Behavioral health providers come from many different backgrounds. Your child can see more than one behavioral health provider at a time. All of the behavioral health providers that work with your child are part of your child's care team.

You are your child's strongest advocate, and you can lead your child's care team. If you need some help or advice on how to do this you can call Parents Involved Network (PIN), a parent support group in Philadelphia, at (267) 507-3860.

Most children will work with these behavioral health providers:

1. Therapist

A therapist can be a psychologist or a social worker. The therapist will meet most often with your child and will give your child the most support. The therapist will also be your main contact.

2. Psychiatrist

A psychiatrist is the medical doctor on your child's care team. The psychiatrist is usually the one who prescribes medications, if they are needed.

Other professionals can be part of your child's care team. These include nurses, teachers, or your child's primary care doctor. By having these other people who know your child on the care team, it can help everyone understand what the main issues really are, and what kind of help is best.





Your child has talents and skills, and your family has qualities that make it strong and special. Your care team should always make sure that these special skills are talked about and used to help make your child and family stronger.

MY CHILD NEEDS HELP. WHAT DO I DO?

The first thing you should do is get your child health insurance

If you do not have health insurance, call Public Citizens for Children and Youth at (215) 563-5848 x17 for help.

Some people are denied health insurance or are told that they are “not eligible.” If this has happened to your child, you can still get help. You can find agencies that take uninsured children in the red pages in this guide. Look for agencies that have free services or a “sliding scale fee.” A sliding scale fee is a small fee that you will be asked to pay for the services.

If you do have health insurance, there are different ways to find a behavioral health provider.

1. You can call your insurance company.
 - a. If you have Medical Assistance, call Community Behavioral Health (CBH) at 1 (888) 545-2600.
 - b. If you have CHIP or private insurance, call the number on the back of your insurance card.
2. You can go to the red pages in this guide for a list of agencies in your area.
3. You can go to the back pocket for a list of providers in your schools.
4. You can also ask your child’s doctor, school nurse, or school counselor for help.

When you call a behavioral health provider, you need to ask if they still take your insurance. Also, be ready to set up your first appointment when you call. Some providers may not be able to see your child right away. You can call different providers to find the appointment that works best for you. But, you should only keep one appointment. Cancel any appointments that you do not need.

SECTION 2: TYPES OF CARE

I'VE CALLED A BEHAVIORAL HEALTH PROVIDER. WHAT HAPPENS NEXT?

When you call a behavioral health provider, you will make an intake appointment. At the intake appointment, the behavioral health provider will do an evaluation of your child. The behavioral health provider may also speak with you. You may be asked how your child deals with other people, how your child has been acting, and about your child's physical health. All of this information will help decide what care is best for your child.

WHAT ARE BEHAVIORAL HEALTH SERVICES?

Behavioral health services are the types of help your child can get for his or her behavioral health issues. There are many types of behavioral health services. The most common types of behavioral health services are outpatient and community-based.

WHAT IS THE DIFFERENCE BETWEEN OUTPATIENT AND COMMUNITY-BASED SERVICES?

One of the differences between these services is where the care takes place.

Outpatient services will take place in your behavioral health provider's office. So, you will go to the provider for your appointments. Outpatient services can include:

- Individual counseling, where your child works one-on-one with his/her therapist
- Group counseling, where your child gets to work with the therapist and other children who have similar needs
- Family counseling, where your whole family works with the therapist

Community-based services come to you. They give your child support at home and at school. Common types of community-based services are:

• Wraparound

Wraparound gives your child help where he/she needs it. This can be both at home and at school. A wraparound team is made up of three workers, and depending on your child's needs, he/she will get one or more of these services:

- 1. Behavior Specialist Consultant** – figures out the best plan for your child's care.
- 2. Therapeutic Staff Support** – gives your child one-on-one help in school.
- 3. Mobile Therapist** – gives therapy to your child and family.

• School-based services: see section 3 for more information

Children who get community-based services must have Medical Assistance. These services must also be ordered by a psychologist or psychiatrist. To learn more about how to get these services for your child, call Community Behavioral Health at 1 (888) 545-2600 or talk to your child's behavioral health provider.

SECTION 3: SCHOOL-BASED SERVICES

WHAT ARE THE SCHOOL-BASED SERVICES?

There are several school-based services in the School District of Philadelphia. Each school has different services. For a list of services in the schools, see the handout in the back pocket of this guide.

THE MOST COMMON SCHOOL-BASED SERVICES ARE:

WRAPAROUND (OR BEHAVIORAL HEALTH REHABILITATION SERVICES)

Wraparound gives children help both in school and at home. The Therapeutic Staff Support (TSS) is the Wraparound worker who will give a child one-on-one help in the classroom. TSS is available to students through highschool but mostly works with children in kindergarten-8th grade.

SCHOOL THERAPEUTIC SERVICES (STS):

STS includes both individual support and group therapy for children. Children who are in kindergarten-8th grade can get STS.

STS HAS THREE PARTS:

- 1. Lead Clinician** – this worker gives children therapy at school.
- 2. Behavioral Health Worker** – this worker gives children help in the classroom.
- 3. Group Mobile Therapy** – this is where a group of children with behavioral health needs get to work together

CHILDREN ACHIEVING THROUGH RE-EDUCATION (CARE)

CARE gives children the most help in school. For this service a child leaves his/her school and goes to a classroom with other children who have similar behavioral health needs. A teacher and at least one therapist works with each CARE class. CARE is for children in 2nd-7th grades.

The CARE classes are not in every school in Philadelphia. A child might have to go to a different school if he/she is put into a CARE class. There is transportation that can help children get to the new school. To find out what schools have CARE classes, please see the hand-out in the back pocket.

WHAT SCHOOL-BASED SERVICES ARE THERE FOR MY YOUTH IN HIGH SCHOOL?

Most of the school-based services focus on children in kindergarten-8th grade. When a student enters high school, there are school counselors that he/she can see. There are also many outpatient services for teens. For a list of outpatient services, go to the red pages in this guide. You can also contact your school's Resource Specialist. The Resource Specialist will be able to help you find outpatient services for your child.

If your child goes to Frankford High School, there is an Outpatient Clinic that he/she can go to. For more information about the Outpatient Clinic at Frankford High School, go to the page in the back pocket of this guide.

HOW CAN MY CHILD GET THESE SERVICES?

If your child already has a therapist, talk to him to see if school-based services could be good for your child.

You can also ask for help from your child's school. Contact the school's CSAP coordinator, school counselor, or principal. The school will use CSAP to figure out if your child needs school-based care.

WHAT IS CSAP?

CSAP is the Comprehensive Student Assistant Process (CSAP). CSAP is there to help any student who is having trouble at school.

CSAP has three levels, or tiers. The type of care a child gets is based on the level he/she is in.

Tier 1. This level of CSAP works on helping the child in a group of children with similar issues, in the classroom. The child's teacher will meet with other teachers to make a plan for how to best help each child.

Tier 2. This level of CSAP gives more individual help to a child. The school counselor will set up a meeting with you, your child's teacher, and other school staff, such as the nurse. All of you will work together to create a plan to help your child. A second meeting should take place in 30 days. This will give you the chance to find out how your child is doing. If this meeting does not take place in 30 days, you should ask the school counselor to set up a meeting.

Tier 3. This level of CSAP has the most support for a child. At this level, the school counselor will ask for special services for your child. This could be making an Individualized Education Plan (IEP) for your child or moving him/her to a CARE class.

You can also skip CSAP and ask for an evaluation done by a school psychologist, of your child right away. This evaluation will find out what services would best help your child. You should ask for this evaluation if your child is often having problems at school, such as being sent home a lot of the time. Contact the principal and the school's special education director to ask for an evaluation. When you ask for an evaluation, you will have to sign a form that gives the school permission to do the evaluation. The school has 60 days to do the evaluation after you sign the form.

DO I HAVE TO PAY FOR THESE SCHOOL-BASED SERVICES?

No, you do not have to pay for any services your child gets at school. These services are paid for by Medical Assistance (MA). So, your child needs to have MA to get these services.

Children with CHIP or private insurance may still be able to get these services. Children with private insurance can have MA at the same time. Children with CHIP may be able to switch to MA. Call PCCY at (215) 563-5848 x17 for more information.

SECTION 4: PAYING FOR CARE

HOW DO I PAY FOR CARE FOR MY CHILD?

In most cases, your child's health insurance will pay for his/her care.

1. Medical Assistance (MA)

Children who have MA can get all "medically necessary" behavioral health services for free. Services are called "medically necessary" when a doctor orders them. In Philadelphia, Community Behavioral Health pays for behavioral health services for people with MA. You can call Community Behavioral Health at 1 (888) 545-2600.

2. CHIP – Children's Health Insurance Program

CHIP is Pennsylvania's health insurance program for uninsured children and teens. You may be charged monthly fees and co-payments based on your income.

In Philadelphia, CHIP insurance is provided through 4 different health insurance companies. These 4 companies are listed below.

Two of these companies use another company to manage their behavioral health services. The phone numbers for more information about their behavioral health services are also listed below.

- **Aetna:** 1 (800) 755-2422
- **UnitedHealthcare:** 1 (800) 414-9025
- **Kidz Partners (through CompCare):** 1 (877) 710-8222
- **Kidz Partners' Special Needs Unit:** 1 (866) 500-4571 [has case managers to help members access special needs services]
- **Keystone Health Plan East (through Magellan):** 1 (800) 688-1911



3. Private Insurance

Most people get private insurance through their jobs. Here is a list of the common types of private insurance in our area. Call the provided phone numbers for more information about their behavioral health services.

- **Aetna:** 1 (800) 424-1580
- **Cigna:** 1 (800) 926-2273
- **Independence Blue Cross (Personal Choice):** 1 (800) 626-8144
- **Oxford:** 1 (800) 201-6991
- **TRICARE (Health Net):** 1 (877) 874-2273
- **United Behavioral Health Care:** 1 (800) 562-2532

You can also call the member services number on the back of your insurance card. Member services will be able to tell you what kinds of behavioral health services your insurance covers and they can provide a list of providers who accept your insurance.

CAN MY CHILD GET SERVICES EVEN WITHOUT HEALTH INSURANCE?

Children who do not have health insurance can get services at one of the Community Mental Health Centers. These centers have free or very low cost behavioral health care for people who are not eligible for insurance or are uninsurable due to immigration status. They will help anyone who lives in Philadelphia. Go to the red pages to find these health centers.

If you are denied services at any of the Community Mental Health Centers because you do not have insurance, call the Department of Behavioral Health and Intellectual disAbility Services at (215) 685-5400. Please have the name of the person denying you an appointment and the date you called the center.

Remember – most children in Philadelphia can get health insurance. If your child does not have health insurance, you can call PCCY's confidential Child Health Watch Helpline at (215) 563-5848 x17. PCCY can help you apply for insurance over the phone. You can also contact your neighborhood County Assistance Office (welfare office). If you have Internet access, you can apply for health insurance on COMPASS at www.compass.state.pa.us.



SECTION 5: WHAT CAN I EXPECT OF THESE SERVICES?

HOW LONG WILL MY CHILD WAIT TO GET THESE SERVICES?

If your child has Medical Assistance, behavioral health providers must see your child within 7 days. If your child needs urgent care, the provider must see him/her within 24 hours. If it is an emergency, you can take your child to the city's behavioral health emergency room. See page 18 for more information.

Some behavioral health agencies may not be able to see your child within 1 week. But do not give up and do not get discouraged. Try calling other agencies to find out if they can see your child sooner. If you still are having a hard time getting your child seen by a behavioral health provider, call PCCY at (215) 563-5848 x17 for help.

DO I NEED TO GIVE PERMISSION FOR MY CHILD TO SEE A THERAPIST?

If your child is under the age of 14, you will need to give permission before he/she can start to get care. Children who are age 14 or older and have Medical Assistance or CHIP do not need your permission to get care. However, some behavioral health providers may ask that you give permission before they will begin to help your child, even if he/she is 14 or older.

WHAT IF I AM UNHAPPY WITH MY CHILD'S BEHAVIORAL HEALTH PROVIDER OR THEIR CARE PLAN?

If your child is getting outpatient or community-based services:

You have the right to ask for your child to see a different therapist or go to a different behavioral health provider. Before you ask for this change, you should try talking with the current therapist. You can tell him/her about your worries, and see if the therapist can make changes without getting in the way of your child's care.

If there is a more serious problem, you can also file a complaint with the behavioral health provider. If the problem is not fixed, you can file a complaint with your behavioral health insurance company. You will need to call your insurance company and ask them how to file the complaint.

If your child has Medical Assistance, you can also call Philadelphia's Office of Mental Health at (215) 685-5400. When you call, ask for a children's program representative.

If your child is getting school-based services:

You should talk about your worries with your child's care team. You have the right to ask for this team meeting at any time. You should contact the school counselor or principal to arrange the team meeting. The team meeting should include all of the school staff who are involved in your child's care.

If your child has an Individualized Education Plan (IEP), you should contact the special education director at your child's school. The special education director is in charge of the care of children who have IEPs, and should be your main contact person in the school if you have any worries. If you have any more concerns about your child's IEP, you should contact the Mental Health Association of Southeastern PA at (215) 751-1800 or the Disability Rights Network at 1 (800) 692-7443.

WHAT IF I NEED HELP GETTING MY CHILD TO THERAPY?

If your child has Medical Assistance, you can get help. The Medical Assistance Transportation Program either gives you free rides to your child's appointments or repays you for what it costs to get your child to his/her appointments.

In order to use the Medical Assistance Transportation Program, you must:

1. Have an ACCESS card, which you get from the Pennsylvania Department of Welfare.
2. Fill out Section I of the Medical Assistance Transportation Program Application and have your doctor fill out and sign Section II

For more information about this program, call LogistiCare at 1 (877) 835-7412. You can also get more information at <http://matp.pa.gov>.



WHERE TO GO FOR HELP

No	Name	Location	Phone/Website	Insurance	Services
Outpatient/Community-Based Services in Philadelphia					
Service Codes: Counseling—I-Individual; F-Family; G-Group; P-Psychiatrist; CB-Community-based; SA-Sexual abuse; B-Bereavement; Play-Play therapy; FB-Family-based; W-Wraparound; D&A-Drug&alcohol Note: Philadelphia County contracted agencies are in bold and provide services to any Philadelphia County Resident, whether insured or uninsured.					
1	Delaware County Professional Services	1420 Walnut St. 19102	(610) 892-3800 www.dcpsonline.com	CHIP Private	Counseling: I, F, G SA, B, Play
2	JFK Community Mental Health/ Mental Retardation Center	112 N. Broad St. 19102	(215) 568-0860 www.jfkmhmr.org	Medical Assistance Private Sliding scale fee	Counseling: I, F P, W, FB, D&A, SA, B, Play
3	Philadelphia Consultation Center	313 S. 16th St. 19102	(215) 732-8244 www.pcctherapy.com	Medical Assistance CHIP Private Sliding scale fee	Counseling: I, F, G P, CB, FB, D&A, SA, B, Play
4	Harmony Mental Health Services, Inc.	2400 Chestnut St. 19103	(215) 568-5900 www.harmonyprofessionalcoun- seling.com	CHIP Private	Counseling: I, F P, B, Play
5	The Consortium, Inc.	26 S. 40th St. 19104	(215) 596-8300 www.consortium-inc.org	Medical Assistance CHIP Private Sliding scale fee	Counseling: I, F, G P, CB, FB, D&A
6	Elwyn	4040 Market St. 19104	(215) 895-5588 www.elwyn.org	Medical Assistance	Counseling: I, F P
7	Intercultural Family Services, Inc.	4254-56 Chestnut St. 19104	(215) 386-8490 www.ifsinc.org	Medical Assistance Sliding scale fee	Counseling: I, F, G P, W, FB, Play
8	Bethanna Community Services	1212 Wood St. 19107	(215) 335-6500 x206 www.bethanna.org	Medical Assistance CHIP Sliding scale fee	Counseling: I, F P, W, SA, B, Play
9	Children's Service, Inc.	1315 Walnut St. Suite 200 19107	(215) 670-5952 www.csichild.org	Medical Assistance Private Sliding scale fee	Counseling: I, F, G P, W, SA, B, Play
10	Hall Mercer Child & Family Outpatient Services	245 S. 8th St. 19107	(215) 829-5554	Medical Assistance Sliding scale fee	Counseling: I, F P, CB, B, Play
11	Jefferson University Outpatient Services	833 Chestnut St., Suite 210 19107	(215) 955-8291	Medical Assistance	Counseling: I, F P
12	Philadelphia Mental Health Center	1235 Pine St. 19107	(215) 735-9379 www.philamentalhealth.org	Medical Assistance Private	Counseling: I, F P, CB, W
13	CORA Services, Inc.	8540 Verree Rd. 19111	(215) 342-7660 www.coraservices.org	CHIP Private Sliding scale fee	Counseling: I, F, G CB, W, FB, D&A, B
14	Northeast Community Mental Health Centers	2152 N. Front St. 19122	(215) 291-4357 www.ncmhc.com	Medical Assistance	Counseling: I, F, G P, FB, SA, B, Play

No	Name	Location	Phone/Website	Insurance	Services
15	Children's Crisis Treatment Center	417 N. 8th St. Suite 402 19123	(215) 496-0584; (215) 496-0707 www.cctckids.org	Medical Assistance CHIP Private	Counseling: I, F P, CB, W, FB, SA, B, Play
16	Eleventh Street Family Health Services	850 N. 11th St. 19123	(215) 769-1103 www.fpcn.us	Medical Assistance Sliding scale fee	Counseling: I, F, G P, CB, B, SA, Play
17	JFK Poplar Clinic	321 W. Girard Ave. 19123	(215) 235-6250 www.jfkmhmr.org	Medical Assistance Sliding scale fee	Counseling: I, F P, CB, SA, B, Play
18	NorthEast Treatment Centers	493 N. 5th St. Suite D 19123	(215) 408-4944 www.netcenters.org	Medical Assistance Sliding scale fee	Counseling: I, F P, W, FB, Play
19	Best Behavioral Healthcare, Inc.	5043 Frankford Ave. 19124	(215) 744-4343 x0	Medical Assistance CHIP Private	Counseling: I, F P, CB, SA, B, Play
20	Greater Philadelphia Health Action	4510 Frankford Ave. 2nd Fl. 19124	(215) 831-9882 www.gphainc.org	Medical Assistance CHIP Private Sliding scale fee	Counseling: I, F, G P, D&A, SA, B, Play
21	NHS, Human Services	265 E. Lehigh Ave. 19125	(215) 427-1500 www.nhsonline.org	Medical Assistance CHIP and Private (Aetna only)	Counseling: I, F P, CB, W, B, Play
22	Shalom, Inc. (Ages 8+)	1080 N. Delaware Ave., # 602 19125	(215) 425-7727 www.shalominc.com	Medical Assistance Private	Counseling: I, F, G P, CB, D&A, SA, B, Play
23	Wedge Medical Center	6701 N. Broad St. 19126	(215) 276-3922	Medical Assistance	Counseling: I, F P, SA, B
24	Intercommunity Action, Inc. (Interac)	6122 Ridge Ave. 19128	(215) 487-1330 www.intercommunityac- tion.org	Medical Assistance CHIP Private Sliding scale fee	Counseling: I, F, G P, CB, W, D&A, SA, B, Play
25	Northern Home for Children	5301 Ridge Ave. 19128	(215) 482-1423 www.northernhome.org	Medical Assistance	Counseling: I, F, G P, W, SA, B, Play
26	Resources for Human Development	90 Rochelle Ave. 19128	(215) 508-3300 www.rhd.org	Medical Assistance	Counseling: I, F P, W, Play
27	Interface Psych Services Inc.	2401 Pennsylvania Ave., Suite 1 A 2 19130	(215) 866-5331 www.interfacepsych.com	CHIP Private	Counseling: I, F, P, CB, SA, B, Play
28	Belmont Center for Comprehensive Treatment	4200 Monument Rd. 19131	1 (800) 220-4357	Medical Assistance CHIP Private Sliding scale fee	Counseling: I, F P, SA, B, Play
29	Community Council	4900 Wyalusing Ave. 19131	(267) 295-8850 www.ccmhmr.org	Medical Assistance	Counseling: I, F, G P, CB, W, FB

No	Name	Location	Phone/Website	Insurance	Services
30	WES Health Center	2514 N. Broad St. 19132	(215) 456-2626 www.drwes.org	Medical Assistance Sliding scale fee	Counseling: I, F, G P, CB, W, FB, D&A, Play
31	COMHAR	166 W. Lehigh Ave. 19133	(267) 861-4382 www.comhar.org	Medical Assistance Sliding scale fee	Counseling: I, F, P, CB, W, FB, SA, B
32	Northeast Community Mental Health Centers	2927 N. 5th St. 19133	(215) 291-4357 www.ncmhc.com	Medical Assistance	Counseling: I, F, G P, FB, SA, B, Play
33	Nueva Vida	3169 N. 5th St. 19133	(215) 426-9680	Medical Assistance	Counseling: I, F P, B
34	Nueva Vida	616 W. Lehigh Ave. 19133	(215) 229-8857	Medical Assistance	Counseling: I, F P, B
35	Pan American	2561 N. Front St. 19133	(215) 425-8909	Medical Assistance CHIP	Counseling: I, F P
36	Citywide Community Counseling	537 E. Allegheny Ave. 19134	(215) 291-9500	Medical Assistance	Counseling: I, F, G P, CB, W, FB, D&A, SA, B, Play
37	COMHAR	2055 E. Allegheny Ave. 19134	(267) 861-4382 www.comhar.org	Medical Assistance	Counseling: I, F, P, CB, W, FB, SA, B
38	Hispanic Community Counseling Services	1851 E. Allegheny Ave. 19134	(215) 291-8154 www.hccsphil.org	Medical Assistance Sliding scale fee	Counseling: I, F, G P, CB, FB, D&A, SA, B, Play
39	Hispanic Community Counseling Services	3156 Kensington Ave. 19134	(215) 291-8154 www.hccsphil.org	Medical Assistance Sliding scale fee	Counseling: I, F, G P, CB, FB, D&A, SA, B, Play
40	Nueva Vida	112 E. Allegheny Ave. 19134	(215) 291-1250	Medical Assistance	Counseling: I, F P, B
41	Mednet Healthcare System	5044 Spruce St. 19139	(215) 474-4410 www.mednetservices.com	Medical Assistance Sliding scale fee	Counseling: I, F, G P, Play
42	Asociación de Puertorriqueños en Marcha (A.P.M) Mental Health Clinic	3263 N. Front St. 19140	(267) 546-9700 or (267) 546-9701 www.apmphil.org	Medical Assistance	Counseling: I, F, G P, SA, B
43	Asociación de Puertorriqueños en Marcha (A.P.M) Mental Health Clinic	4301 N. Rising Sun Ave. 19140	(267) 296-7220 or (267) 296-7221 www.apmphil.org	Medical Assistance	Counseling: I, F, G P, CB, SA, B
44	Multicultural Wellness Center	120 W. Wyoming Ave. 19140	(215) 324-8190	Medical Assistance	Counseling: I, F, G P, FB, SA, B, Play
45	Northeast Community Mental Health Centers	3805 N. 5th St. 19140	(215) 291-4357 www.ncmhc.com	Medical Assistance	Counseling: I, F, G P, CB, FB, SA, B, Play

No	Name	Location	Phone/Website	Insurance	Services
46	Pan American	4519 N. 5th St. 19140	(215) 457-1620	Medical Assistance CHIP	Counseling: I, F P
47	Belmont Behavioral Health (Einstein)	1200 W. Tabor Rd. 19141	(215) 456-9832	Medical Assistance CHIP Private	Counseling: I, F P, B, FB, Play
48	Wedge Medical Center	4913 N. Broad St. 19141	(215) 329-3200	Medical Assistance	Counseling: I,F P, SA, B
49	WES Health Center	1315 Windrim St. 19141	(215) 456-2626 www.drwes.org	Medical Assistance Sliding scale fee	Counseling: I,F, G P, CB, W, FB, D&A, Play
50	Presbyterian Children's Village	6517 Chester Ave. 19142	(610) 525-5400 www.pcv.org	Medical Assistance CHIP (Magellan only)	Counseling: I,F P, SA, B, Play
51	Greater Philadelphia Health Action	5501 Woodland Ave. 19143	(215) 724-4700 www.gphainc.org	Medical Assistance CHIP Private Sliding scale fee	Counseling: I,F,G P, D&A, SA, B, Play
52	The Health Annex	6120 B Woodland Ave. 2nd Fl. 19143	(215) 727-4721 www.fpcn.us	Medical Assistance Sliding scale fee	Counseling: I, F, G P, Play
53	Abbottsford Falls Family Practice & Counseling	4700 Wissahickon Ave., Suite 118 19144	(215) 843-2580 www.fpcn.us	Medical Assistance Sliding scale fee	Counseling: I,F P, FB, SA, B, Play
54	Juvenile Justice Center of Philadelphia	100 W. Coulter St. 19144	(215) 849-2112 x5221 www.juvenilejustice.org	Medical Assistance	Counseling: I,F,G P, W, SA, B, Play
55	CATCH	1417 Oregon Ave. 19145	(215) 218-9499 www.catchinc.com	Medical Assistance	Counseling: I, G, F P, CB, W, B, Play
56	Intercultural Family Services, Inc.	2317 S. 23rd St. 19145	(215) 468-4673 www.ifsinc.org	Medical Assistance Sliding scale fee	Counseling: I, F, G P, W, FB, Play
57	Greater Philadelphia Health Action AL-Assist Behavioral Health Care Center	1401 S. 4th St. 19147	(215) 339-1070 www.gphainc.org	Medical Assistance CHIP Private Sliding scale fee	Counseling: I,F,G P, D&A, SA, B, Play
58	Wedge Medical Center	1939 S. Juniper St. 19148	(215) 271-5822	Medical Assistance	Counseling: I,F P, SA, B
59	Center for Family Relationships	1600 Magee Ave. 19149	(215) 539-5367 www.cfarcounseling.org	Medical Assistance Sliding scale fee	Counseling: I,F,G P, W, CB, D&A, SA, B, Play
60	Northeast Community Center for MH/MR	7226 Castor Ave. 19149	(215) 831-2863	Medical Assistance CHIP	Counseling: I, F, G P, FB, Play
61	SRI Psychological Services	2824 Cottman Ave., Suite 19 19149	(215) 885-3337 www.sricanhelp.com	CHIP Private	Counseling: I, F P, Play

No	Name	Location	Phone/Website	Insurance	Services
62	PATH, Inc.	8220 Castor Ave. 19152	(215) 728-4565 www.pathcenter.org	Medical Assistance	Counseling: I, F CB, FB, D&A, B
63	NHS Human Services Outpatient Clinic - Knights Road	11082 Knights Rd. 19154	(215) 632-9040 www.nhsonline.org	Medical Assistance	Counseling: I, F P
64	SPIN, Inc.	10521 Drummond Rd. 19154	(215) 612-7625 www.spininc.org	Private	Counseling: I, F P

Specialized Services – Trauma

All of the following agencies provide Trauma-Focused Cognitive Behavioral Therapy(TF-CBT), and may provide other evidence-based treatments, as well.

Key:

Types of trauma program addresses:

A-Abuse (physical, sexual and/or emotional)

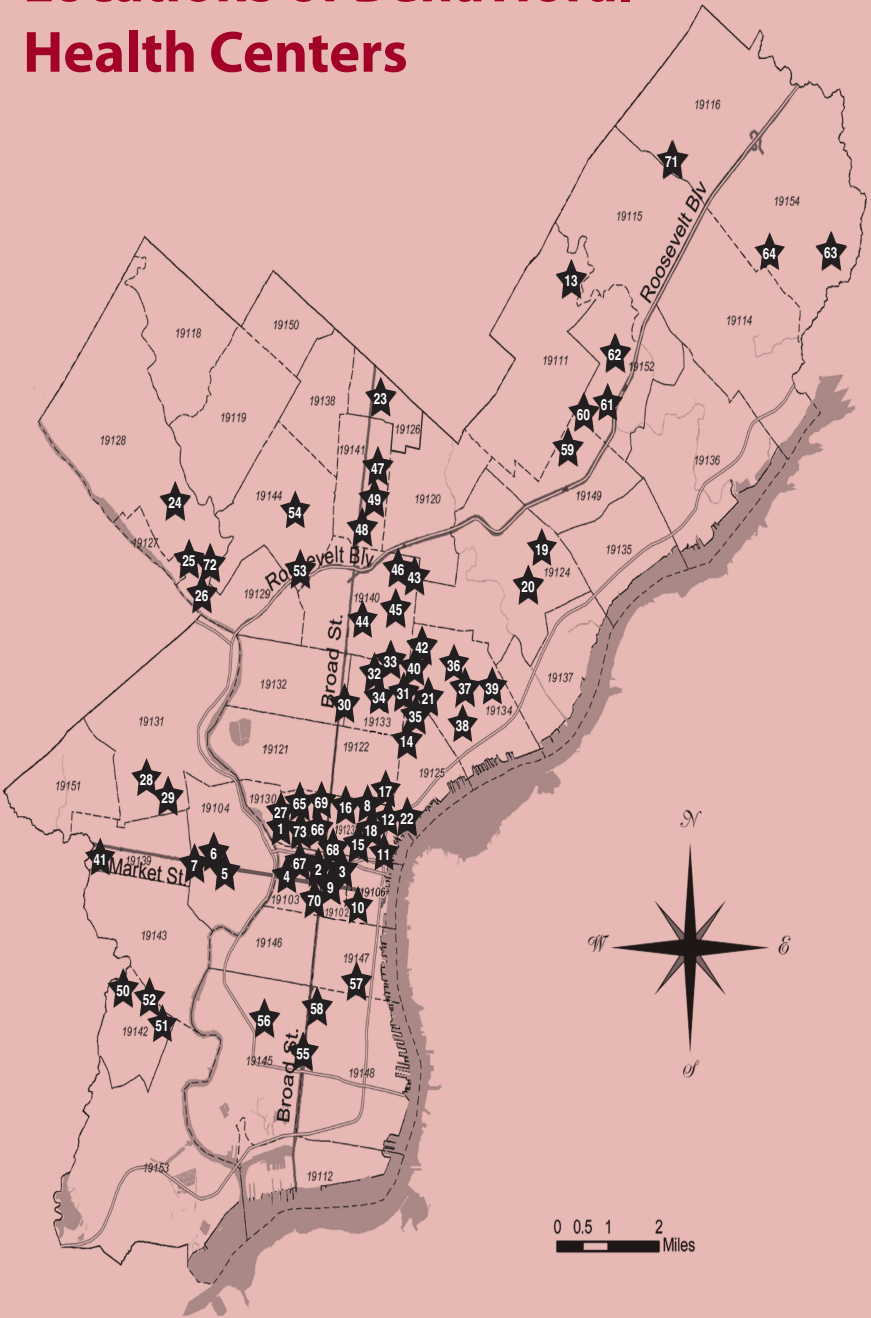
V-Violence (Domestic and/or Community/school)

H- Homicide (lost loved one to homicide, and/or witnessed homicide)

B (Traumatic grief)

65	Children's Crisis Treatment Center	1823 Callowhill St. 19103	(215) 496-0707 www.cctckids.org	Medical Assistance	Sexual trauma; Refugee trauma A, V, H, B
66	SAFE	227 N. 18th St. 19103	(215) 854-7036	Medical Assistance	Sexual abuse victims; A Counseling: I, F P, Play
67	Women Organized Against Rape (WOAR)	1617 JFK Blvd., Suite 1100 19103	(215) 985-3333 www.woar.org	Free	Sexual abuse victims; Refugee trauma A, V Counseling: I, G, F
68	Assessment and Treatment Alternatives	1225 Vine St. 19107	(215) 405-2100 www.atainc.org	Medical Assistance CHIP Private	Sexual abuse victims; A, V, H, B Play
69	Penn Center for Youth and Family Trauma Response and Recovery	245 S. 8th St. 19107	(215) 829-5467 www.med.upenn.edu/traumare-sponse	Medical Assistance	A, V, H, B Counseling: I, F P, Play
70	Joseph J. Peters Institute (JJPI)	100 S. Broad St., Suite 1700 19110	(215) 701-1560 www.jjp.org	Medical Assistance CHIP Private Sliding scale fee	Sexual trauma Counseling: I, F, G A P
71	Jewish Family and Children's Services	10125 Verree Rd. 19116	(267) 256-2000 www.jfcphilly.org	Sliding scale fee	A, V, H, B Counseling: I, F
72	Northern Home for Children	5301 Ridge Ave. 19128	(215) 482-1423 www.northernhome.org	Medical Assistance	A, V, H, B Counseling: I, F, G P, W
73	Anti-Violence Partnership of Philadelphia	2000 Hamilton St. 19130	(215) 567-6776 www.avpphila.org	Free	Victims of violence A, V, H, B Counseling: I, F, G Play

Locations of Behavioral Health Centers



Outpatient/Community-Based Services in Philadelphia

- 1 Delaware County Professional Services
- 2 JFK Community Mental Health/
Mental Retardation Center
- 3 Philadelphia Consultation Center
- 4 Harmony Mental Health Services, Inc.
- 5 The Consortium, Inc.
- 6 Elwyn
- 7 Intercultural Family Services, Inc.
- 8 Bethanna Community Services
- 9 Children's Service, Inc.
- 10 Hall Mercer Child & Family Outpatient Services
- 11 Jefferson University Outpatient Services
- 12 Philadelphia Mental Health Center
- 13 CORA Services, Inc.
- 14 Northeast Community
Mental Health Centers
- 15 Children's Crisis Treatment Center
- 16 Eleventh Street Family Health
Services
- 17 JFK Poplar Clinic
- 18 NorthEast Treatment Centers
- 19 Best Behavioral Healthcare, Inc.
- 20 Greater Philadelphia Health Action
- 21 NHS, Human Services
- 22 Shalom, Inc.
(Ages 8+)
- 23 Wedge Medical Center
- 24 Intercommunity Action, Inc. (Interac)
- 25 Northern Home for Children
- 26 Resources for Human
Development
- 27 Interface Psych Services Inc.
- 28 Belmont Center for
Comprehensive Treatment
- 29 Community Council
- 30 WES Health Center
- 31 COMHAR
- 32 Northeast Community
Mental Health Centers
- 33 Nueva Vida
- 34 Nueva Vida
- 35 Pan American
- 36 Citywide Community Counseling
- 37 COMHAR
- 38 Hispanic Community Counseling Services
- 39 Hispanic Community Counseling Services
- 40 Nueva Vida
- 41 Mednet Healthcare System
- 42 Asociación de Puertorriqueños en Marcha
(A.P.M) Mental Health Clinic
- 43 Asociación de Puertorriqueños en Marcha
(A.P.M) Mental Health Clinic
- 44 Multicultural Wellness Center
- 45 Northeast Community
Mental Health Centers
- 46 Pan American
- 47 Belmont Behavioral Health
(Einstein)
- 48 Wedge Medical Center
- 49 WES Health Center
- 50 Presbyterian Children's Village
- 51 Greater Philadelphia Health Action
- 52 The Health Annex
- 53 Abbottsford Falls Family Practice & Counseling
- 54 Juvenile Justice Center
of Philadelphia
- 55 CATCH
- 56 Intercultural Family Services, Inc.
- 57 Greater Philadelphia Health Action
AL-Assist Behavioral Health Care Center
- 58 Wedge Medical Center
- 59 Center for Family Relationships
- 60 Northeast Community Center for MH/MR
- 61 SRI Psychological Services
- 62 PATH, Inc.
- 63 NHS Human Services Outpatient Clinic -
Knights Road
- 64 SPIN, Inc.

Specialized Services-- Trauma

- 65 Children's Crisis Treatment Center
- 66 SAFE
- 67 Women Organized Against Rape (WOAR)
- 68 Assessment and Treatment Alternatives
- 69 Penn Center for Youth and Family Trauma Response
and Recovery
- 70 Joseph J. Peters Institute (JJPI)
- 71 Jewish Family and Children's
Services
- 72 Northern Home for Children
- 73 Anti-Violence Partnership of Philadelphia

SECTION 6: WHAT WILL BE EXPECTED OF ME?

WHAT WILL BE EXPECTED OF ME WHILE MY CHILD IS GETTING BEHAVIORAL HEALTH HELP?

You may be getting help for your child. But, you have a very important role in his/her care. In fact, you are a part of your child's care team. This means that you should expect to be actively involved in your child's care.

There are several key things that you should do to make sure that your child is getting the most out of his/her care.

- **You must get your child to his/her appointments.**

In order for your child to get the most out of his/her care, you need to make sure that your child attends all of his/her appointments. If you cannot make an appointment, you must call your behavioral health provider and let them know that you cannot make it. There may be another child who is waiting for an appointment and can take that spot.

- **You must attend re-assessments.**

Behavioral health providers will re-assess your child once every few months for services like Wraparound and STS. The behavioral health providers use these re-assessments to make sure your child's care plan is working for your child. You must go to these re-assessments. If you do not go to these re-assessments, your child's provider will not be able to keep on helping your child.

- **If your child has Medical Assistance (MA) or CHIP, you must renew your insurance.**

CHIP needs to be renewed once a year. Contact the insurance company on your insurance card to do this. MA needs to be renewed once every 6 months. Look for a letter in the mail already filled out with your information, that you have to make any changes on and send back.

If you do not renew CHIP once a year or if you do not renew MA once every 6 months, your child will no longer be covered by that insurance. This means that your child will no longer be able to get help.

Also, as part of your child's care team, you should expect to work closely with your child's therapist and listen to the therapist's advice for how to best help your child.

Sometimes you may also decide that in order to better help your child you want to get some additional care for yourself. If you want to get some behavioral health help for yourself, you should talk to your child's therapist or other behavioral health providers. You can also contact one of the behavioral health agencies listed on the red pages. Most of these agencies see both adults and children.

SECTION 7: SPECIAL SERVICES

WHAT SHOULD I DO IN AN EMERGENCY?

If the emergency is putting someone's life at risk, call 911.

If your child is having a behavioral health emergency, you can call the Children's Crisis Response Center at (215) 951-8300. You can also go to the Crisis Response Center right away. It is located in Albert Einstein Medical Hospital. You should try to call ahead first, so the staff can let you know what documents to bring with you. The Crisis Response Center is open 24-hours a day.

Einstein Children's Crisis Response Center

Germantown Campus

1 Penn Blvd., between Chew and Wister Streets

Philadelphia, PA 19144

If your child is having a behavioral health emergency and you are not sure where to go or what to do, you can also call the Mental Health Delegate Line at (215) 685-6440. The Mental Health Delegate Line can send a Mobile Emergency Team (MET) for home visits. If your child cooperates, MET can transport you and your child to the CRC. A parent or guardian must go with the child to the CRC.

You can also call the Crisis and Suicide Counseling Hotline at (215) 686-4420. Trained suicide and crisis intervention staff can provide counseling right away. They will also help you find more services.

WHAT RESOURCES ARE AVAILABLE FOR TRAUMA?

Trauma can be caused by a child seeing or going through a wide variety of negative events. These include:

- Car crashes
- Violence at home or in the community
- Natural disasters
- Sexual, physical, emotional, or verbal abuse
- Painful medical procedures
- Neglect
- Terrorism
- Sudden loss or death of a loved one

Children can recover from trauma. Some will recover with good family and community supports. Other children will need some more help. If the child does not get help, it can lead to long-term, harmful effects. If your child does not get better or gets worse after going through trauma, you should get help from a behavioral health provider that has trauma-focused treatment.

Trauma-focused treatment is specially designed to help children and their families overcome trauma-related difficulties. To find a trauma-focused provider, see the red pages.

WHAT RESOURCES ARE AVAILABLE FOR DRUG AND ALCOHOL TREATMENT FOR CHILDREN AND TEENS?

There are many behavioral health providers in Philadelphia that have drug and alcohol treatment for children and teens. Agencies that offer drug and alcohol treatment are listed in the red pages. If you have Medical Assistance, you can also call Community Behavioral Health (CBH) at 1 (888) 545-2600 for more information.

SECTION 8: OTHER RESOURCES

PARENTING CLASSES

Carson Valley Children's Aid

www.carsonvalley.org

Allegheny West Neighborhood Center

(215) 225-2649

2300 West Allegheny Ave., Philadelphia, 19132

Frankford Neighborhood Center

(215) 535-1039

4451 Frankford Ave., Philadelphia, 19124

Logan Olney Neighborhood Center

(215) 456-5670

800 West Olney Ave, Philadelphia, 19120

Council of Spanish Speaking Organizations, Inc. (Concilio)

(215) 627-3100

www.elconcilio.net

The Federation of Neighborhood Centers (FNC)

(215) 989-3566 x1103

www.federationnc.org

Neighborhood Interfaith Movement

(215) 843-5600

www.nimphilly.org

Pennsylvania Family Support Alliance

1 (800) 448-4906

www.pa-fsa.org

Turning Points for Children

(215) 875-3400

www.pssckids.org

PARENT SUPPORTS AND RESOURCES

NAMI-Philadelphia

1 (800) 223-0500; 1 (717) 238-1514

<http://philadelphia.nami.org>

Parent Action Network

(215) PARENTS [215-727-3687]

Parent to Parent of Pennsylvania

Parent to Parent direct line – 1 (888) 727-2706

Special Kids Network – 1 (800) 986-4550 (works with Parent to Parent)

www.parenttoparent.org

The Arc of Philadelphia

(215) 229-4550

2350 West Westmoreland St., Philadelphia 19140

Catholic Social Service – Family Service Centers

www.catholicsocialservicesphilly.org

[Direct link to family services sites: www.familyservices-phl.org/]

Northeast Philadelphia

7340 Jackson St., Philadelphia, 19136

(215) 624-5920

Southwest Philadelphia

6214 Grays Ave., Philadelphia, 19142

(215) 724-8550

Casa del Carmen

4400 North Reese St., Philadelphia 19140

(215) 329-5660

En español: www.familyservices-phl.org/casadel-carmenespanol.html

The Center for Autism

www.thecenterforautism.org

General Info: (215) 878-3400

3905 Ford Rd., Suite 6, Philadelphia, 19131

Intake: (215) 220-2121

2801 Grant Ave., Philadelphia, 19114

Intake: (215) 220-2163

Consumer Satisfaction Team, Inc.

www.thecst.com

520 N. Delaware Ave., Philadelphia, 19123

(215) 923-9627

Easter Seals of Southeastern Pennsylvania Division

sepa.easterseals.com

Healing Hurt People [St. Christopher's Hospital for Children]

3601 A Street, 2nd floor, 19134

(215) 427-3427

Parent Education Network (PEN)

www.parentednet.org

1 (800) 522-5827

Parents Involved Network (PIN)

(267) 507-3860

1211 Chestnut St., Floor 11, Philadelphia 19107

<http://www.mhasp.org/services/parents-involved-network-pin-philadelphia-county.html>

HELPFUL INTERNET SITES

Community Behavioral Health

www.dbhids.org/community-behavioral-health

COMPASS

<http://www.humanservices.state.pa.us/compass>

Disability Rights Network of Pennsylvania

drnpa.org

Division for Early Childhood: The Council for Exceptional Children

www.dec-sped.org

Education Law Center

www.elc-pa.org

Mental Health Association of Southeastern Pennsylvania (MHASP)

www.mhasp.org

National Child Traumatic Stress Network

www.nctsn.net

Pennsylvania Health Law Project (PHLP)

www.phlp.org

Pennsylvania Yellow Pages for Kids

www.yellowpagesforkids.com

Public Citizens for Children and Youth

www.pccy.org

The Children's Advocacy Project

www.cap4kids.org/Philadelphia

SECTION 9: GLOSSARY

1. **Behavioral health issue** – is the way someone thinks, acts, or feels that gets in the way of his/her daily life.
2. **Behavioral health providers** – people who are trained to care for behavioral health issues
3. **Therapists** – a type of behavioral health provider who gives the most one-on-one care to children with behavioral health needs. They can be a psychologist (MS, MA, PsyD, or PhD) or a social worker (MSW or PhD).
4. **Psychiatrist** – a type of behavioral health provider who is the medical doctor (MD, DO) of a child's care team and who usually orders medications.
5. **Sliding scale fee** – a small fee that uninsured persons may be asked to pay when getting behavioral health services.
6. **Behavioral health services** – the types of help your child can get for his/her behavioral health issues.
7. **Outpatient services** – types of behavioral health services that you receive in a behavioral health provider's office. These can include individual, group, or family therapy.
8. **Community-based services** – types of behavioral health services that are provided at home or in school. These can include wraparound and school-based services.
9. **Wraparound** – a type of community-based service that gives support to the child both in the home and at school. Depending on your child's needs, the team might include TSS, a Behavior Specialist Consultant, and a Mobile Therapist.
10. **Behavior Specialist Consultant** – this Wraparound worker figures out what the best care plan is for a child.
11. **Mobile Therapist** – this Wraparound worker will provide therapy for your child and family
12. **Therapeutic Staff Support (TSS)** – this Wraparound worker is trained to give a child one-on-one help in the classroom.
13. **School-Based Services** – behavioral health services that are provided at schools. These include Wrap-around, School Therapeutic Services (STS), and Children Achieving through Re-Education (CARE).
14. **School Therapeutic Services (STS)** – a school-based service that gives students support through both individual and group therapy. The STS team is made up of a Lead Clinician, Behavioral Health Worker, and Group Mobile Therapy.
15. **Lead Clinician** – an STS worker who will give children therapy at school.
16. **Behavioral Health Worker** – an STS worker who will give children help in the classroom.
17. **Group Mobile Therapy** – the part of STS where children with similar behavioral health needs will get to work together.
18. **Children Achieving through Re-Education (CARE)** – a school-based service that gives students with behavioral health needs the most support at school.
19. **Comprehensive Student Assistant Process (CSAP)** – a process used in the schools to help students who are having trouble at school.
20. **Medical Assistance (MA)** – the type of insurance that pays for community-based services. Your child may be eligible for MA based on your income or if your child has special needs.
21. **Community Behavioral Health (CBH)** – this is the insurance company who pays for behavioral health services for children insured through Medical Assistance in Philadelphia.
22. **Children's Health Insurance Program (CHIP)** – Pennsylvania's health insurance program for uninsured children and teens. In Philadelphia, CHIP is provided by Keystone Health Plan East, UnitedHealthcare, Kidz Partners, and Aetna.
23. **Medical Assistance Transportation Program (MATP)** – a program that gives your child free rides to his/her behavioral health appointments or repays you for the costs of getting your child to his/her care.
24. **Resource Specialist** – a specially trained person in public schools who can help you find outpatient services, and other supports and services, for your children.

For supporting this project, special thanks to:

***The Pew Charitable Trusts
and
The William Penn Foundation***

FOR MORE INFORMATION CONTACT:



Public Citizens for Children and Youth
1709 Benjamin Franklin Parkway, Sixth Floor
Philadelphia, PA 19103
215-563-5848
info@pccy.org / www.pccy.org

School	School Telephone	School Based Social Services (SBSS) (Resource Specialists)	SBSS ProviderAgency Phone Number	School Therapeutic Services (STS)	STS Provider Agency Phone Number	CARE (see SBSS and STS listings for phone numbers)
For help with referrals to STS and CARE, you can also call the school's provider directly.						
Academy at Palumbo	215-351-7618	Wordsworth	215-643-5400			
Adaire, Alexander	215-291-4712	WCA/Congreso	215-236-9911/215-763-8870			
Alcorn	215-952-6219	Wordsworth	215-643-5400	Wordsworth	215-643-5400	
Allen, Ethan	215-537-2530	Einstein	215-456-9832	Progressions	215-924-0684	
Allen, Ethel D.	215-227-4404	NorthEast Treatment Centers (NET)	215-408-4944	Northern Home	215-482-1423	
Amy James Martin	215-291-4172	Einstein	215-456-9832			
Amy Northwest	215-951-5200	Devereux	215-864-6666			
Anderson, Add B.	215-471-2903	Wordsworth	215-643-5400	Northern Home	215-482-1423	
Arthur, Chester A.	215-875-5774	Wordsworth	215-643-5400	CATCH	215-218-9499	
Arts Academy at Rush	215-281-2603	PATH	215-728-4565			
Bache-Martin	215-648-5074	NorthEast Treatment Centers (NET)	215-408-4944	Children's Crisis Treatment Center (CtC)	215-496-0584/215-496-0707	
Baldi, C.C.A.	215-961-2003	PATH	215-728-4565			
Barry	215-471-2744	Northern Home	215-482-1423	CATCH	215-218-9499	
Barton, Clara	215-456-3007	Carson Valley Children's Aid (CVCA)	215-233-1960			
Bartram, John	215-492-6450					
Beeber, Dimner	215-581-5513	Northern Home	215-482-1423	Resources for Human Development (RHD)	215-508-3300	
Bethune, Mary Mc Leod	215-227-4433	Carson Valley Children's Aid (CVCA)	215-233-1960			
Blaine, James G.	215-684-5085			Interac	215-487-1330	
Blankenburg, Rudolph	215-581-5505	Northern Home	215-482-1423	Community Council	267-295-8850	
Bodine, William W.	215-351-7332	WCA/Congreso	215-236-9911/215-763-8870			
Bok, Edward	215-952-6200	Wordsworth	215-643-5400			
Bregy, F. Amedee	215-952-6218	Wordsworth	215-643-5400	CATCH	215-218-9499	
Bridesburg	215-537-2515	Einstein	215-456-9832			
Brown, Henry A.	215-291-4717	WCA/Congreso	215-236-9911/215-763-8870			
Brown, Joseph H.	215-335-5650	PATH	215-728-4565			
Bryant, William Cullen	215-471-2910	Wordsworth	215-643-5400	WES	215-456-2626	
Carnell Annex at Fels	215-537-2910	Carson Valley Children's Aid (CVCA)	215-233-1960	WES	215-456-2626	
Carnell, Laura H.	215-537-2527	Carson Valley Children's Aid (CVCA)	215-233-1960	WES	215-456-2626	
Carroll, Charles	215-291-4707	Devereux	215-864-6666			
Carver HS for Eng & Science	215-684-5079	NorthEast Treatment Centers (NET)	215-408-4944			
Cassidy, Lewis C.	215-581-5506	Northern Home	215-482-1423			
Catherine Annex	215-727-5780	Wordsworth	215-643-5400			
Catherine, J. W.	215-727-2155	Wordsworth	215-643-5400			
Cayuga	215-456-3167	WCA/Congreso	215-236-9911/215-763-8870			
Central	215-276-5262	Devereux	215-864-6666			
Childs, George W.	215-952-6213	Wordsworth	215-643-5400	Philadelphia Mental Health Center (PMHC)	215-735-9379	Wordsworth
Clemente, Roberto	215-291-5400	WCA/Congreso	215-236-9911/215-763-8870	WES	215-456-2626	
Cleveland, Grover	215-227-4415	Carson Valley Children's Aid (CVCA)	215-233-1960			
Comegys, Benjamin B.	215-727-2162	Wordsworth	215-643-5400	WES	215-456-2626	
Comly, Watson	215-961-2008	PATH	215-728-4565			
Communications Tech	215-492-6958	Wordsworth	215-643-5400			
Conwell, Russell	215-227-4722	WCA/Congreso	215-236-9911/215-763-8870			
Cooke, Jay	215-456-3002	Carson Valley Children's Aid (CVCA)	215-233-1960			
Cook-Wissahickon	215-487-4463	Northern Home	215-482-1423			
Cramp, William	215-291-4704	WCA/Congreso	215-236-9911/215-763-8870			
Creative And Performing Arts	215-952-2462	Wordsworth	215-643-5400			
Creighton, Thomas	215-537-2531	Carson Valley Children's Aid (CVCA)	215-233-1960	Elwyn	215-895-5588	
Crossan, Kennedy C.	215-728-5014	PATH	215-728-4565			
Day, Anna Blakiston	215-276-5250	Devereux	215-864-6666			
DeBurgos, Julia	215-291-4065	WCA/Congreso	215-236-9911/215-763-8870			Children's Crisis Treatment Center (CtC)
Decatur, Stephen	215-281-2606	PATH	215-728-4565			
Dick, William	215-684-5081	NorthEast Treatment Centers (NET)	215-408-4944			
Disston, Hamilton	215-335-5661	Einstein	215-456-9832			
Dobbins, Murrell	215-227-4421	CATCH	215-218-9499			
Dobson, James	215-487-4460	Northern Home	215-482-1423			
Douglas, Stephen A.	215-291-4705	Einstein	215-456-9832			
Drew, Charles R.	215-823-8204	Northern Home	215-482-1423	CATCH	215-218-9499	
Duckrey, Tanner	215-684-5066	NorthEast Treatment Centers (NET)	215-408-4944			
Dunbar	215-684-5065	WCA/Congreso	215-236-9911/215-763-8870	NorthEast Treatment Centers (NET)	215-408-4944	
Edison, Thomas A.	215-324-9599					
Edmonds, Franklin S.	215-276-5261	Devereux	215-864-6666	Resources for Human Development (RHD)	215-508-3300	
Edmunds, Henry R.	215-537-2520	Einstein	215-456-9832	Resources for Human Development (RHD)	215-508-3300	
Elkin, Lewis	215-291-4701	WCA/Congreso	215-236-9911/215-763-8870	COMHAR	267-861-4382	

School	School Telephone	School Based Social Services (SBSS) (Resource Specialists)	SBSS ProviderAgency Phone Number	School Therapeutic Services (STS)	STS Provider Agency Phone Number	CARE (see SBSS and STS listings for phone numbers)
Ellwood	215-276-5286	Devereux	215-864-6666			
Emlen, Eleanor C.	215-951-4010	Devereux	215-864-6666	Northern Home	215-482-1423	
Fairhill	215-227-4406	WCA/Congreso	215-236-9911/215-763-8870	NorthEast Treatment Centers (NET)	215-408-4944	
Farrell, Louis H.	215-728-5009	PATH	215-728-4565			
Fell, D. Newlin	215-952-6237	Wordsworth	215-643-5400			
Fels	215-537-2516					
Feltonville Intermediate	215-456-3012	Carson Valley Children's Aid (CVCA)	215-233-1960	Carson Valley Children's Aid (CVCA)	215-233-1960	
Feltonville Sch of Arts & Sci	215-456-5603	Carson Valley Children's Aid (CVCA)	215-233-1960	Carson Valley Children's Aid (CVCA)	215-233-1960	
Ferguson, Joseph	215-684-5092	WCA/Congreso	215-236-9911/215-763-8870	Children's Crisis Treatment Center (CtC)	215-496-0584 215-496-0707	
Finletter, Thomas K.	215-276-5265	Carson Valley Children's Aid (CVCA)	215-233-1960			Wordsworth
Fitler, Edwin H.	215-951-4009	Devereux	215-864-6666			
FitzPatrick, Aloysius L.	215-281-2602	PATH	215-728-4565			
FitzSimons	215-227-4431					
Forrest, Edwin	215-335-5652	Einstein	215-456-9832	Elwyn	215-895-5588	
Fox Chase	215-728-5016	PATH	215-728-4565			
Frank, Anne	215-961-2005	PATH	215-728-4565			
Note: Outpatient clinic available at the following school.						
Frankford HS	215-537-2519	WES	215-456-2626			
Franklin Learning Center	215-684-5916	NorthEast Treatment Centers (NET)	215-408-4944			
Franklin, Benjamin	215-299-4662	CATCH	215-218-9499			
Franklin, Benjamin (ES)	215-728-5017	Carson Valley Children's Aid (CVCA)	215-233-1960	NorthEast Treatment Centers (NET)	215-408-4944	
Fulton, Robert	215-951-4005	Devereux	215-864-6666			
Furness, Horace	215-952-6226	CATCH	215-218-9499			
Germantown	215-951-4004					
Gideon, Edward	215-684-5072	NorthEast Treatment Centers (NET)	215-408-4944			
Girard Academic Music Program	215-952-8589	Wordsworth	215-643-5400			
Girard, Stephen	215-952-8554	Wordsworth	215-643-5400	Wordsworth	215-643-5400	
Girls High School	215-276-5258	Carson Valley Children's Aid (CVCA)	215-233-1960			
Gompers, Samuel	215-581-5503	Northern Home	215-482-1423	Holcomb	610-352-8942	
Greenberg, Joseph	215-961-2002	PATH	215-728-4565	Progressions	215-924-0684	
Greenfield, Albert M.	215-299-3566	Wordsworth	215-643-5400			
Hackett, Horatio B.	215-291-4706	WCA/Congreso	215-236-9911/215-763-8870			
Hamilton, Andrew	215-471-2911	Wordsworth	215-643-5400	WES	215-456-2626	
Hancock, John	215-281-2604	PATH	215-728-4565			
Harding, Warren G.	215-537-2528	Einstein	215-456-9832	Resources for Human Development (RHD)	215-508-3300	
Harrington, Avery	215-471-2914	Wordsworth	215-643-5400	Resources for Human Development (RHD)	215-508-3300	
Harrington, Avery (Annex)	215-471-2909	Wordsworth	215-643-5400			
Harrison, William	215-684-5067	NorthEast Treatment Centers (NET)	215-408-4944			
Hartranft, John F.	215-684-5088	WCA/Congreso	215-236-9911/215-763-8870			
Henry, Charles W.	215-951-4006	Devereux	215-864-6666			
Heston, Edward	215-581-5514	Northern Home	215-482-1423	Intercultural	215-386-8490	215-482-1423
High School of the Future	215-823-5502	Northern Home	215-482-1423			
Hill, L.P.	215-684-5077	NorthEast Treatment Centers (NET)	215-408-4944			
Hill-Freedman	215-276-5260	Devereux	215-864-6666			
Holme, Thomas	215-335-5656	PATH	215-728-4565	Progressions	215-924-0684	
Hopkinson, Francis	215-537-2526	Einstein	215-456-9832	NHS, Human Services	1-888-647-0020	
Houston, Henry E.	215-248-6608	Devereux	215-864-6666			
Howe, Julia Ward	215-276-5270	Devereux	215-864-6666			
Huey, Samuel B.	215-471-2901	Wordsworth	215-643-5400	Northern Home	215-482-1423	
Hunter, William H.	215-291-4710	WCA/Congreso	215-236-9911/215-763-8870			
Jackson, Andrew	215-952-6223	Wordsworth	215-643-5400	CATCH	215-218-9499	
Jenks, A.S.	215-952-6224	Wordsworth	215-643-5400			
Jenks, John S.	215-248-6604	Devereux	215-864-6666			
Jones, John Paul	215-291-4709	Einstein	215-456-9832	Community Council	267-295-8850	
Juniata Park Academy	215-289-7930	Einstein	215-456-9832	NorthEast Treatment Centers (NET)	215-408-4944	
Kearny, General Philip	215-351-7343	NorthEast Treatment Centers (NET)	215-408-4944			
Kelley, W.D.	215-684-5071	NorthEast Treatment Centers (NET)	215-408-4944			
Kelly, John B.	215-951-4011	Devereux	215-864-6666	Northern Home	215-482-1423	
Kenderton	215-227-4412	Carson Valley Children's Aid (CVCA)	215-233-1960	Interac	215-487-1330	
Kensington CAPA HS	215-291-5010	Einstein	215-456-9832			
Kensington Culinary & Arts	215-291-5185	Einstein	215-456-9832			
Kensington Intern'l Bus & Fin	215-291-5168	Einstein	215-456-9832			
Kensington Urban Education	215-492-6454	Einstein	215-456-9832			
Key, Francis Scott	215-952-6216	Wordsworth	215-643-5400			
King, Martin L.	215-276-5253	Devereux	215-864-6666			

School	School Telephone	School Based Social Services (SBSS) (Resource Specialists)	SBSS ProviderAgency Phone Number	School Therapeutic Services (STS)	STS Provider Agency Phone Number	CARE (see SBSS and STS listings for phone numbers)
Kinsey, John L.	215-276-5266	Devereux	215-864-6666	WES	215-456-2626	
Kirkbride, Elizabeth B.	215-952-6214	Wordsworth	215-643-5400			
La Brum MS	215-281-2607	PATH	215-728-4565			
Lamberton HS	215-581-5647	Northern Home	215-482-1423	Holcomb	610-352-8942	
Lankenau	215-487-4465	Devereux	215-864-6666			
Lawton, Henry W.	215-335-5659	Einstein	215-456-9832			
Lea, Henry C.	215-471-2915	Wordsworth	215-643-5400			
Leeds	215-428-6602	Devereux	215-864-6666	Resources for Human Development (RHD)	215-508-3300	
Leidy, Joseph	215-581-5500	Northern Home	215-482-1423			
Levering, William	215-487-4462	Northern Home	215-482-1423	Northern Home	215-482-1423	
Lincoln	215-335-5653					
Lingelbach, Anna L.	215-951-4001	Devereux	215-864-6666			
Locke, Alain	215-823-8202	Northern Home	215-482-1423	Carson Valley Children's Aid (CVCA)	215-233-1960	
Loesche, William H.	215-961-2000	PATH	215-728-4565			
Logan, James	215-456-3006	Devereux	215-864-6666	Northern Home	215-482-1423	
Longstreth, William	215-727-2158	Wordsworth	215-643-5400	Resources for Human Development (RHD)	215-508-3300	
Lowell, James R.	215-276-5272	Carson Valley Children's Aid (CVCA)	215-233-1960	Elwyn	215-895-5588	
Lowlow, James R.	215-684-5060	NorthEast Treatment Centers (NET)	215-408-4944	NorthEast Treatment Centers (NET)	215-408-4944	
Marshall, John	215-537-2521	Einstein	215-456-9832	Progressions	215-924-0684	
Marshall, Thurgood	215-456-0170	Carson Valley Children's Aid (CVCA)	215-233-1960			
Mastbaum, Jules E.	215-291-4703	Devereux	215-864-6666			
Masterman	215-299-4661	NorthEast Treatment Centers (NET)	215-408-4944			
Mayfair	215-335-5651	Einstein	215-456-9832	Children's Crisis Treatment Center CcTC	215-496-0584/215-496-0707	
McCall, General George	215-351-7350	Wordsworth	215-643-5400			
McCluskey, John F.	215-248-6600	Devereux	215-864-6666			
McClure, Alexander	215-456-3001	WCA/Congreso	215-236-9911/215-763-8870	WES	215-456-2626	
McDaniel, Delaplaine(Lower)	215-952-6380	Wordsworth	215-643-5400	Philadelphia Mental Health Center (PMHC)	215-735-9379	
McDaniel, Delaplaine(Upper)	215-952-6380	Wordsworth	215-643-5400	Philadelphia Mental Health Center (PMHC)	215-735-9379	
McKinley, William	215-291-4702	WCA/Congreso	215-236-9911/215-763-8870			
McMichael, Morton	215-823-8205	Northern Home	215-482-1423			
Meade, General George	215-684-5062	NorthEast Treatment Centers (NET)	215-408-4944			
Meehan, Austin	215-335-5654	PATH	215-728-4565			
Meredith, William M.	215-351-7360	Wordsworth	215-643-5400			
Middle Years Alternative (MYA)	215-581-5633	Northern Home	215-482-1423			
Mifflin, Thomas	215-951-4007	Northern Home	215-482-1423			
Mitchell, Weir	215-727-2160	Wordsworth	215-643-5400	Resources for Human Development (RHD)	215-508-3300	
Moffet, John	215-291-4721	NorthEast Treatment Centers (NET)	215-408-4944			
Moore, J. Hampton	215-728-5011	PATH	215-728-4565			
Morris, Robert	215-684-5087	NorthEast Treatment Centers (NET)	215-408-4944	Assessment and Treatment Alternatives (ATA)	215-405-2100	
Morrison, Andrew J.	215-456-3004	Carson Valley Children's Aid (CVCA)	215-233-1960			
Morton (Annex)	215-727-2028	Wordsworth	215-643-5400	WES	215-456-2626	
Morton, Thomas G.	215-727-2164	Wordsworth	215-643-5400	WES	215-456-2626	
Motivation HS	215-492-6451	Wordsworth	215-643-5400			
Munoz-Marin, Luis	215-291-8825	WCA/Congreso	215-236-9911/215-763-8870	Children's Crisis Treatment Center CcTC	215-496-0584/215-496-0707	
National Constitution HS	215-351-7310	WCA/Congreso	215-236-9911/215-763-8870			
Nebinger, George W.	215-952-6202	Wordsworth	215-643-5400			
Northeast High	215-728-5018	Devereux	215-864-6666			
Olney Elementary	215-456-3003	Carson Valley Children's Aid (CVCA)	215-233-1960			
Overbrook Educational Center	215-581-5890	Northern Home	215-482-1423			
Overbrook Elementary	215-581-5691	Northern Home	215-482-1423			
Overbrook High	215-581-5507					
Parkway Center City	215-351-7095	NorthEast Treatment Centers (NET)	215-408-4944			
Parkway Northwest	215-248-6220	Devereux	215-864-6666			
Parkway West	215-581-5510	Northern Home	215-482-1423			
Pastorius, Francis	215-951-4008	Devereux	215-864-6666	Interac	215-487-1330	WES
Patterson, John	215-492-6453	Wordsworth	215-643-5400			
Penn Alexander	215-823-5465	Wordsworth	215-643-5400			
Penn Treaty	215-291-4715	WCA/Congreso	215-236-9911/215-763-8870	COMHAR	267-861-4382	
Pennell	215-276-5267	Devereux	215-864-6666	Resources for Human Development (RHD)	215-508-3300	
Pennypacker, Samuel	215-276-5271	Devereux	215-864-6666	Green Tree	215-843-4528	
Penrose	215-492-6455	Wordsworth	215-643-5400			
Pepper, George	215-492-5467	Wordsworth	215-643-5400	Carson Valley Children's Aid (CVCA)	215-233-1960	

School	School Telephone	School Based Social Services (SBSS) (Resource Specialists)	SBSS ProviderAgency Phone Number	School Therapeutic Services (STS)	STS Provider Agency Phone Number	CARE (see SBSS and STS listings for phone numbers)
Phila. HS for Business & Tech	215-351-7375	NorthEast Treatment Centers (NET)	215-408-4944			
Pierce, Thomas M.	215-227-4411	NorthEast Treatment Centers (NET)	215-408-4944			
PMA at Leeds	215-248-6650	Devereux	215-864-6666			
PMA at Elverson	215-684-5091	WCA/Congreso	215-236-9911/215-763-8870			
Pollock, Robert B.	215-961-2004	PATH	215-728-4565			
Potter-Thomas	215-227-4423	WCA/Congreso	215-236-9911/215-763-8870	Northern Home	215-482-1423	
Powel, Samuel	215-823-8201	Northern Home	215-482-1423			
Pratt, Anna	215-684-5083	NorthEast Treatment Centers (NET)	215-408-4944	Assessment and Treatment Alternatives (ATA)	215-405-2100	
Prince Hall	215-276-5255	Devereux	215-864-6666			
Randolph Skills Ctr.	215-227-4407	Northern Home	215-482-1423			
Reynolds, General John	215-684-5061	NorthEast Treatment Centers (NET)	215-408-4944	Children's Crisis Treatment Center CcTC	215-496-0584/215-496-0707	
Rhawnhurst	215-728-5013	PATH	215-728-4565			
Rhoads, James	215-581-5504	Northern Home	215-482-1423	Community Council	267-295-8850	
Rhodes, E. Washington	215-227-4402	Devereux	215-864-6666			
Richmond	215-291-4718	Einstein	215-456-9832	NHS, Human Services	1-888-647-0020	
Robeson HS for Human Services	215-823-8207	Northern Home	215-482-1423			
Roosevelt, Theodore	215-951-4170	Devereux	215-864-6666	Northern Home	215-482-1423	
Rowen, William	215-276-5251	Devereux	215-864-6666	Green Tree	215-843-4528	
Roxborough	215-487-4464	Devereux	215-864-6666			
Saul, Walter B.	215-487-4467	Devereux	215-864-6666			
Sayre	215-471-2904	CATCH	215-218-9499			
Science Leadership Academy	215-979-5620	NorthEast Treatment Centers (NET)	215-408-4944			
Sharswood, George	215-952-6212	Wordsworth	215-643-5400			
Shaw, Anna	215-727-2161	Wordsworth	215-643-5400	Carson Valley Children's Aid (CVCA)	215-233-1960	
Shawmont	215-487-4466	Northern Home	215-482-1423			
Sheppard	215-291-4711	WCA/Congreso	215-236-9911/215-763-8870			
Sheridan West Academy	215-537-2920	Einstein	215-456-9832			
Sheridan, P.	215-291-4724	Einstein	215-456-9832	Elwyn	215-895-5588	
Smith	215-952-6222	Wordsworth	215-643-5400	CATCH	215-218-9499	
Solis-Cohen, S.	215-728-5012	PATH	215-728-4565	Children's Crisis Treatment Center CcTC	215-496-0584/215-496-0707	
South Philadelphia	215-952-6220	CATCH	215-218-9499			
Southwark	215-952-8606	Wordsworth	215-643-5400	CATCH	215-218-9499	
Spring Garden	215-684-5070	NorthEast Treatment Centers (NET)	215-408-4944			
Spruance, Gilbert	215-537-2514	PATH	215-728-4565	Children's Crisis Treatment Center CcTC	215-496-0584/215-496-0707	
Stanton, Edwin M.	215-875-3185	Wordsworth	215-643-5400			
Stanton, M.H.	215-227-4434	NorthEast Treatment Centers (NET)	215-408-4944	Northern Home	215-482-1423	
Stearne, Allen M.	215-537-2522	Einstein	215-456-9832			
Steel, Edward	215-456-3008	Carson Valley Children's Aid (CVCA)	215-233-1960	Interac	215-487-1330	
Strawberry Mansion	215-684-5089	Devereux	215-864-6666			
Sullivan, James J.	215-537-2524	Einstein	215-456-9832	Progressions	215-924-0684	
Swenson Arts &Tech	215-961-2009	Devereux	215-864-6666			
Taggart, John H.	215-952-6228	Wordsworth	215-643-5400	CATCH	215-218-9499	
Taylor, John	215-227-4435	WCA/Congreso	215-236-9911/215-763-8870			
Tilden, William	215-492-6454	Wordsworth	215-643-5400			
University City	215-387-5100					
Vare, Abigail	215-952-8620	Wordsworth	215-643-5400			
Vaux, Roberts	215-684-5068	CATCH	215-218-9499			
Wagner, General Louis	215-276-5252	Devereux	215-864-6666	Green Tree	215-843-4528	
Waring, Laura W.	215-684-5073	NorthEast Treatment Centers (NET)	215-408-4944			
Washington Jr., Grover	215-456-0422	Carson Valley Children's Aid (CVCA)	215-233-1960	Elwyn	215-895-5588	
Washington, George	215-961-2001	Devereux	215-864-6666			
Washington, George Elem.	215-952-6209	Wordsworth	215-643-5400	CATCH	215-218-9499	
Washington, Martha	215-823-8203	Northern Home	215-482-1423			Community Council
Webster, John	215-537-2525	Einstein	215-456-9832	Community Council	267-295-8850	
Welsh, John	215-291-4708	WCA/Congreso	215-236-9911/215-763-8870			
West Philadelphia	215-471-2902					
Whittier, John	215-227-4410	NorthEast Treatment Centers (NET)	215-408-4944	Community Council	267-295-8850	Community Council
Widener Memorial	215-456-3015	Devereux	215-864-6666			
Willard, Frances	215-291-4714	Einstein	215-456-9832	NHS, Human Services	1-888-647-0020	
Wilson, Alexander	215-823-8206	Wordsworth	215-643-5400			
Wilson, Woodrow	215-728-5015	PATH	215-728-4565	Children's Crisis Treatment Center (CcTC)	215-496-0584/215-496-0707	
Wister, John	215-951-4003	Devereux	215-864-6666	Interac	215-487-1330	
Wright, Richard	215-684-5076	NorthEast Treatment Centers (NET)	215-408-4944	Assessment and Treatment Alternatives (ATA)	215-405-2100	
Ziegler, William H.	215-537-2510	Einstein	215-456-9832			