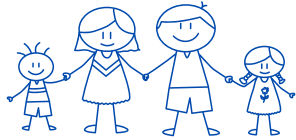
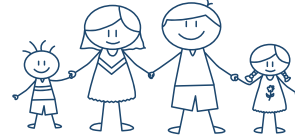


Guided Implementation Series

FOR



Families

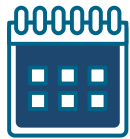


Heard about Charting the LifeCourse but are unsure where to start?

Join us for our Family Implementation series.

WHAT IS FAMILY IMPLEMENTATION?

Family Implementation is an opportunity to learn about Charting the Lifecourse and to actually begin utilizing the tools to help your family achieve their good life.



THURSDAYS

JULY: 25

AUGUST: 1, 8, 15



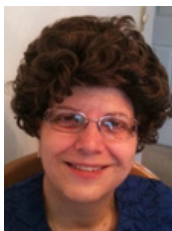
4:00PM-5:30PM

-
- ✓ HAVE SUPPORT TO BEGIN USING TOOLS AND RESOURCES
 - ✓ LEAVE WITH INFO YOU CAN SHARE WITH PEOPLE WHO HELP YOU
 - ✓ IDENTIFY HOW AND WHEN TO USE (IMPLEMENT)

These sessions are helpful for ALL families, across ALL ages.

We will:

- Review some helpful resources and tools
- Have time to start working with them with and for your loved ones.
- Share and learn with other families



Barbara Sapharas:

Ohio Ambassador-Charting the LifeCourse
National Team Member, Charting the LifeCourse-
University of Missouri-Kansas City (UMKC)



Brandi Muhammad:

OCECD Information
Specialist/Trainer and CtLC
Ambassador Ohio

Register Now



Department of
Education &
Workforce



**FAMILY RESOURCE
NETWORK OF OHIO**

Ohio's Official Hub for
Charting the LifeCourse